

Venue

The conference will be held in the south-western part of Berlin (Berlin-Steglitz). Hardly any other city in the world can claim such a poignant history; hardly any has seen such rapid change. Today, almost 25 years after the fall of the Berlin Wall, the city exudes its own unique appeal. Germany's capital now presents itself as a modern, liberal and creative metropolis in the heart of Europe. Berlin offers its visitors a truly unique experience, ranging from cultural establishments such as museums and operas right through to the adventurous and innovative restaurant scene. No wonder Berlin is the third most visited tourist destination in Europe, the number one choice of venue for conventions and trade fairs in Germany, and the third most popular conference venue worldwide.

Accommodation

The conference will be held in the Best Western Hotel in Berlin-Steglitz which offers accommodation for workshop participants at a reduced rate. We will also block limited contingencies in several hotels of different price categories nearby. Further information can be obtained through the workshop website.

Reichstag in Berlin



Dates and Contact

14 – 18 September 2014
Best Western Berlin-Steglitz
Berlin, Germany

Call for abstracts	1 February 2014
Deadline for abstract submission	1 June 2014
Notification of acceptance	15 July 2014
Deadline for reduced fee registration	28 August 2014

Conference Office

Michael Beißel / Margret Frey
Forschungszentrum Jülich GmbH
Peter Grünberg Institute – Technical
Services & Administration / PGI-6
52425 Jülich, Germany
Phone: +49 2461 61 - 1739 / 6139
Fax: +49 2461 61 - 2410 / 2620
Email: lp9@fz-juelich.de

Conference Chair

Claus M. Schneider
Forschungszentrum Jülich GmbH
Peter Grünberg Institute – PGI-6
52425 Jülich, Germany

See our website for more information:
www.fz-juelich.de/pgi/LEEMPEEM-9/

EDITORIAL INFORMATION

Published by: Forschungszentrum Jülich GmbH | 52425 Jülich | Germany
Photos: Skyline on title page ©JiSIGN/Fotolia, microscopic images @Forschungszentrum Jülich, Berlin photos @visitBerlin | Scholvien
Printed by: Grafische Medien Forschungszentrum Jülich | 52425 Jülich | Germany

Member of the Helmholtz Association



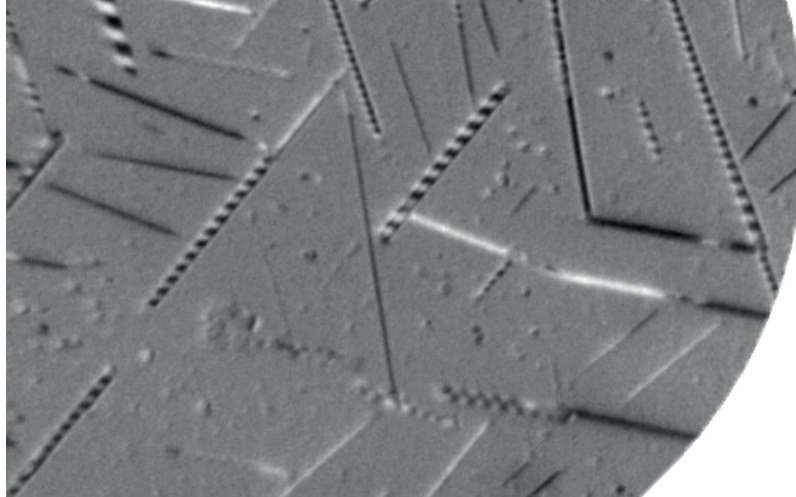
LEEM/PEEM 9

First Announcement
14 – 18 September 2014, Berlin, Germany

Scope

The LEEM/PEEM Workshop is a biennial meeting reviewing the status of immersion lens microscopies such as Low Energy Electron Microscopy (LEEM), Photoelectron Emission Microscopy (PEEM), spin-polarized LEEM (SPLEEM), X-Ray PEEM (XPEEM) and related microscopy and spectromicroscopy techniques. The first of these workshops was held in Tempe, Arizona, in 1998 and since then, the venue has moved between America, Europe and Asia. The main aim of the meeting is to discuss scientific advances in the fields of surface and solid state physics, to disseminate knowledge and promote applications of cathode lens microscopy to a broad audience of interested scientists.

German Cathedral on Gendarmenmarkt, Berlin



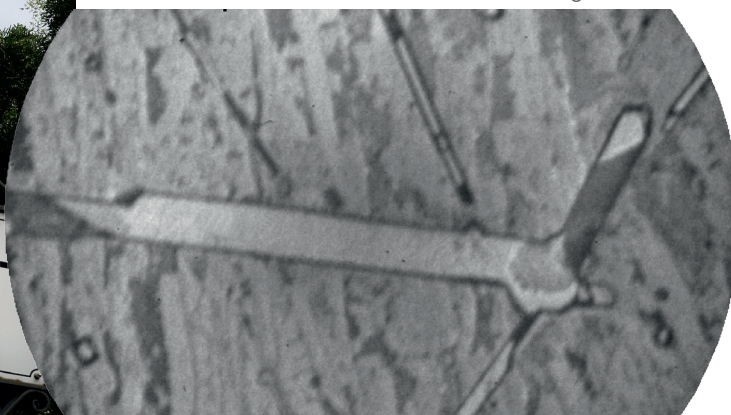
Magnetic domains (striped pattern) of iron oxide nanowires on ruthenium. PEEM with magnetic X-ray circular dichroism

LEEM/PEEM 9 highlights the most recent scientific advances as well as instrumental developments in the field of cathode lens microscopy. Topics covered will include:

- surfaces
- thin films
- nanoparticles
- organic films
- surface chemistry
- magnetism
- spintronics
- time-resolved methods
- instrumental advances
- novel applications of LEEM and PEEM.

The program will consist of oral, poster, and tutorial sessions. The tradition of LEEM/PEEM having a single-session structure will also be upheld this year.

Iron oxide nanowire on ruthenium. LEEM image



Organization

International Advisory Committee:

Michael Altman (Hongkong)
Ernst Bauer (USA)
Gary Kellogg (USA)
Takanori Koshikawa (Japan)
Andrea Locatelli (Italy)
Bene Poelsema (Netherlands)
Ruud Tromp (USA)

Program Committee

Wolfgang Kuch
Florian Kronast
Ingo Krug
Frank Meyer zu Heringdorf
Claus M. Schneider
Carsten Wiemann

TV-Tower and World Clock at Alexanderplatz, Berlin

